

# A Kerry Polka

Tracks 1-2

(you can put this note in sometimes for variety)

(if you are ending the piece and not going back to the beginning, leave out the slur so you end on a down bow)

# Off She Goes (Jig)

Tracks 3-4

(leave the slur out if you need to the last time, so you can end down bow)

# Galtee Rangers (Reel)-- simple version

Tracks 5-6

Musical notation for the simple version of Galtee Rangers (Reel). It consists of four staves of music in G major and 2/2 time. The first staff shows the beginning of the piece. The second and third staves contain first and second endings, with the second ending labeled "very last time". The fourth staff concludes the piece with a final cadence.

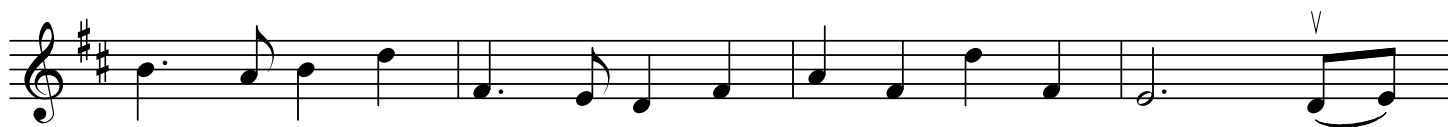
# Galtee Rangers (Reel)-- more complex version

Tracks 5-6

Musical notation for the more complex version of Galtee Rangers (Reel). It consists of four staves of music in G major and 2/2 time. This version includes triplets, accents (marked with "v"), and slurs. The first ending is labeled "1" and the second ending is labeled "2" and "very last time". The notation is more intricate than the simple version.

(play these two notes as pickups if you want to)

### The Dawning of the Day (basic tune)



## The Dawning of the Day (with ornaments)

Notice that in slow tunes like this, you can use vibrato as an ornament as well (don't use it in fast tunes, though!).

Track 7

The musical score for 'The Dawning of the Day' is presented on eight staves of music. The key signature is two sharps (F# and C#), and the time signature is 4/4. The melody is written in treble clef. The score begins with a vibrato ornament (V) over the first note. The melody consists of a series of eighth and quarter notes, often beamed together, with some notes tied across bar lines. The piece concludes with a double bar line at the end of the eighth staff.

### Cuil Aodha Slide

Tracks 8-9

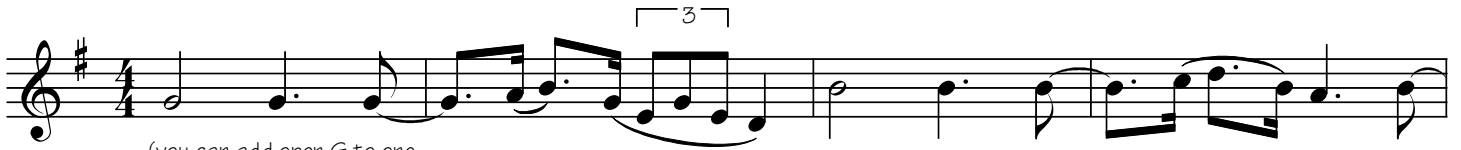


(you can add the open string  
sometimes for variety)

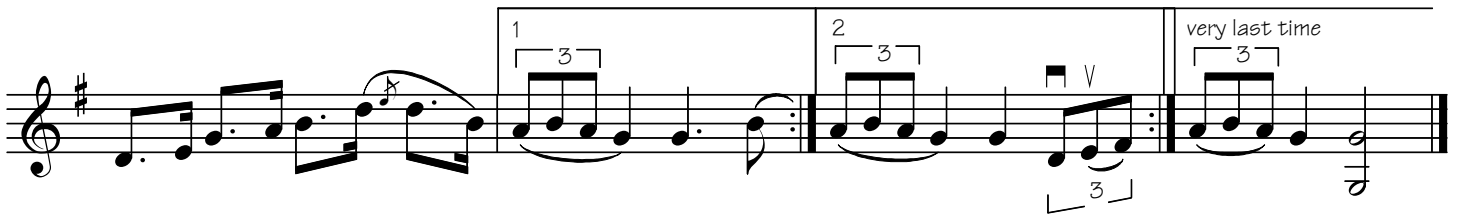
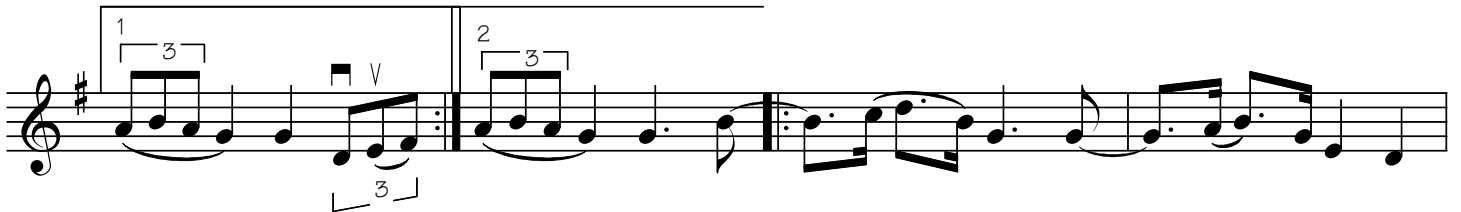
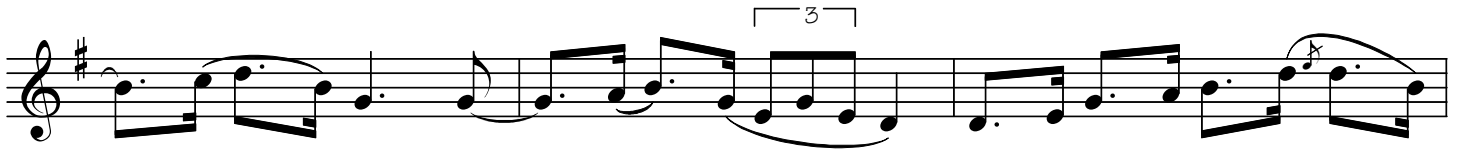


## Lucy Farr's (Barndance)

Track 10



(you can add open G to one  
or more of these for variety  
on repeats)



from Martin Hayes' album *Under the Moon*

# The Stack of Wheat (Hornpipe)

Tracks 11-12

The musical score for "The Stack of Wheat (Hornpipe)" is written in G major (one sharp) and 4/4 time. It consists of seven staves of music. The first staff begins with a "Lead-in" section, marked with a double bar line and a repeat sign. The main melody is characterized by eighth-note patterns, often grouped in triplets. There are several first and second endings marked with "1" and "2" respectively. The piece concludes with a double bar line.

Musical notation for "The Stack of Wheat" in G major (one sharp) and 2/4 time. The first staff shows the main melody with accents (v) and triplets (3). The second staff shows a repeat sign with two endings: "going back to sign at beginning" and "very last time".

Notice that the B section in "The Stack of Wheat" does not have a repeat sign-- it is written out twice instead, because it ends differently the first time and the second time. Some tunes do this-- the ending of the B section the second time around, returns to the melody of the end of the A section.

## Little Diamond (Polka)

Tracks 13-14

Musical notation for "Little Diamond (Polka)" in G major (one sharp) and 2/4 time. The first staff shows the main melody with accents (v). The second staff shows a repeat sign with two endings: "1" and "2". The third staff shows a repeat sign with three endings: "1", "2. (back to beginning)", and "3. (very last time)".

(add open D if you want)



# The Liltin' Banshee (Jig)

Tracks 15-16



### Anything for John Joe? (Reel)

Tracks 17-18

Musical score for 'Anything for John Joe? (Reel)' in G major (one sharp) and 4/4 time. The score consists of four staves of music. The first staff begins with a treble clef, a key signature of one sharp (F#), and a 4/4 time signature. It features several measures with a 'V' (accidentals) above the notes and a triplet of eighth notes. The second staff contains a repeat sign and another triplet. The third and fourth staves continue the melodic line with various note values and slurs. The piece concludes with a double bar line.

### Dan O'Keefe's Slide

Tracks 19-20

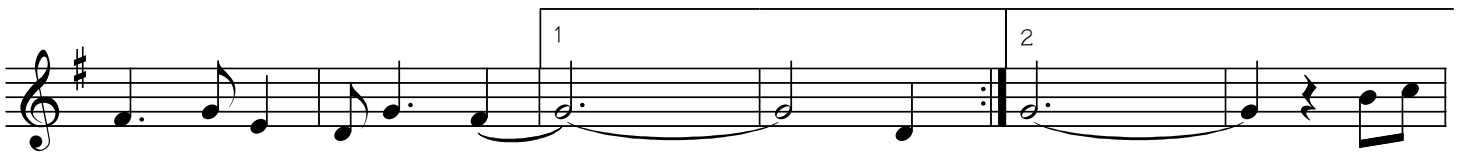
Musical score for 'Dan O'Keefe's Slide' in G major (one sharp) and 6/8 time. The score consists of three staves of music. The first staff begins with a treble clef, a key signature of one sharp (F#), and a 6/8 time signature. It features several measures with a 'V' (accidentals) above the notes. The second staff contains a first ending (marked '1') and a second ending (marked '2'). The third staff continues the melodic line with various note values and slurs, ending with a double bar line.

## Planxty Fanny Power

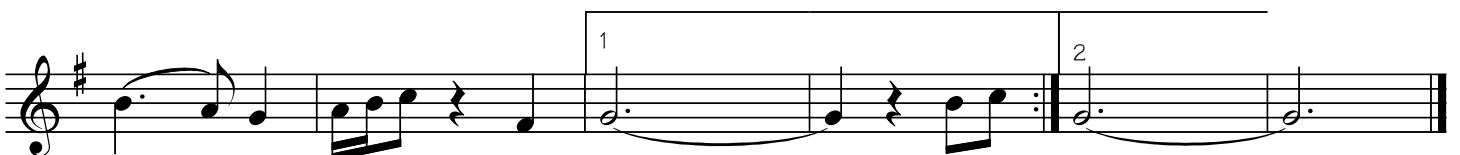
Turlough O'Carolan (1670 - 1738) was a blind, itinerant Irish harper and composer. Considered by many to be Ireland's national composer, he wrote over 220 tunes which survive to this day. A planxty is a tune he wrote and dedicated to a particular individual.

Notice as you listen to the CD, how the note lengths vary. You can change how long you hold the dotted notes and how quickly you play the 8th note afterwards. It also sounds nice and more waltz-like, to shorten some of the quarter notes so they are not all smooth and connected. You can also vary where you put the slurs as you repeat the tune.

Tracks 21-22



(you can slur the 8th notes sometimes for variety)



(slur these  
sometimes)